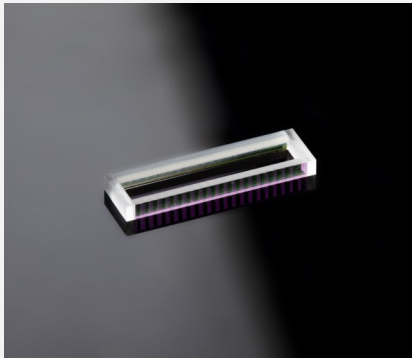


FAC-SACA Collimation Module

FAC590 with SACA for ES100/P500



Features and Advantages

Collimation module consisting of FAC590 and SACA 100-500 mounted with side tabs for the collimation of the fast and slow axis of diode lasers. Emitter size of up to 100 μm and emitter pitch 500 μm .

* Product similar to image, see product drawing below.

Product Specifications

Specification Data	Unit	Value
Material		S-TIH53 (Ohara)
Length (L)	mm	11.5 ± 0.25
Width (W)	mm	1.0 ± 0.05
Thickness (T)	mm	3.34 ± 0.05
Clear aperture	mm^2	9.5×0.84
Back focal length BFL @ 808 nm	mm	0.15
Pitch	mm	0.5
Fast axis power within an angle of $\pm 1.1 \text{ mrad}$ ⁽¹⁾	%	> 85
Transmission	%	> 98

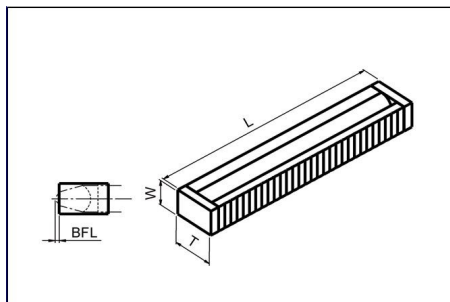
Product Code MOD000568

Specification Data ⁽²⁾	Unit	Value
AR-coating	nm	790 - 990
Remaining divergence (FW1/e ²) for slow axis	mrad	40 (typically)

⁽¹⁾ Valid for an emitter-height of 1 μm and no smile of the laser diode.

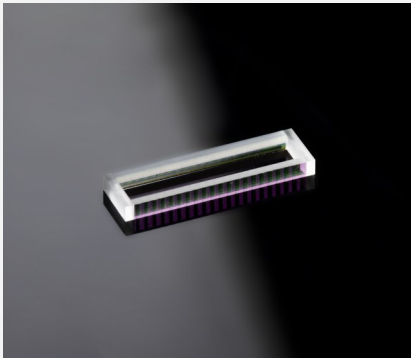
⁽²⁾ Customized coating and bottom tab for mounting on request.

Product Dimensions (mm)



FAC-TELA Collimation Module

FAC590 with TELA for ES200/P400



Features and Advantages

Collimation module consisting of FAC590 and telescope array TELA 200-400 mounted with side tabs for the collimation of the fast and slow axis of diode lasers.

Emitter size of up to 200 μm and emitter pitch 400 μm .

* Product similar to image, see product drawing below.

Product Specifications

Specification Data	Unit	Value
Material		S-TIH53 (Ohara)
Length (L)	mm	13.0 ± 0.25
Width (W)	mm	1.0 ± 0.05
Thickness (T)	mm	4.13 ± 0.05
Clear aperture	mm^2	11×0.84
Back focal length BFL @ 808 nm	mm	0.15
Pitch	mm	0.4
Fast axis power within an angle of $\pm 1.1 \text{ mrad}$ ⁽¹⁾	%	> 85
Transmission	%	> 98

Product Code

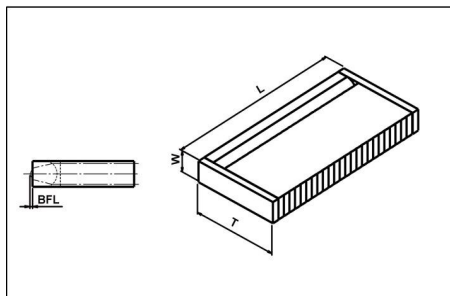
MOD000246 ⁽²⁾

Specification Data	Unit	Value
AR-coating	nm	790 - 990
Remaining divergence ($\text{FW1}/e^2$) for slow axis	mrad	100 (typically)

⁽¹⁾ Valid for an emitter-height of 1 μm and no smile of the laser diode.

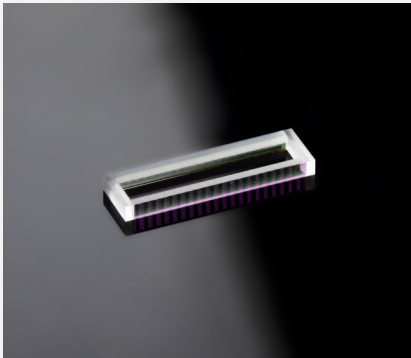
⁽²⁾ Example for customization – customized coating and bottom tab for mounting on request.

Product Dimensions (mm)



FAC-SACA Collimation Module

FAC910 with SACA for ES100/P500



Features and Advantages

Collimation module consisting of FAC910 and SACA 100-500 mounted with side tabs for the collimation of the fast and slow axis of diode lasers. Emitter size of up to 100 μm and emitter pitch 500 μm .

* Product similar to image, see product drawing below.

Product Specifications

Specification Data	Unit	Value
Material		S-TIH53 (Ohara)
Length (L)	mm	11.5 ± 0.25
Width (W)	mm	1.5 ± 0.05
Thickness (T)	mm	3.71 ± 0.05
Clear aperture	mm^2	9.5×1.34
Back focal length BFL @ 808 nm	mm	0.09
Pitch	mm	0.5
Fast axis power within an angle of $\pm 0.7 \text{ mrad}$ ⁽¹⁾	%	> 85
Transmission	%	> 98

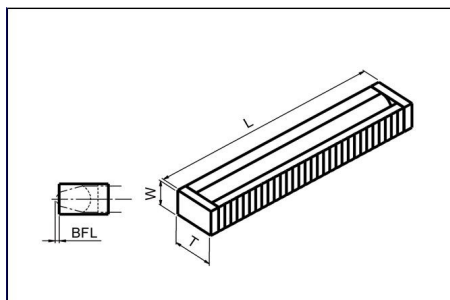
Product Code MOD000631 ⁽²⁾

Specification Data ⁽²⁾	Unit	Value
AR-coating	nm	790 - 990
Remaining divergence (FW1/e ²) for slow axis	mrad	40 (typically)

⁽¹⁾ Valid for an emitter-height of 1 μm and no smile of the laser diode.

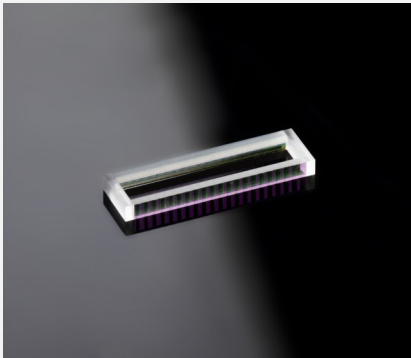
⁽²⁾ Example for customization – customized coating and bottom tab for mounting on request.

Product Dimensions (mm)



FAC-SACA Collimation Module

FAC910 with SACA for ES150/P500



Features and Advantages

Collimation module consisting of FAC910 and SACA 150-500 mounted with side tabs for the collimation of the fast and slow axis of diode lasers. Emitter size of up to 150 μm and emitter pitch 500 μm .

* Product similar to image, see product drawing below.

Product Specifications

Specification Data	Unit	Value
Material		S-TIH53 (Ohara)
Length (L)	mm	13.0 ± 0.25
Width (W)	mm	1.5 ± 0.05
Thickness (T)	mm	2.65 ± 0.05
Clear aperture	mm^2	11.0×1.34
Back focal length BFL @ 808 nm	mm	0.09
Pitch	mm	0.5
Fast axis power within an angle of $\pm 0.7 \text{ mrad}$ ⁽¹⁾	%	> 85
Transmission	%	> 98

Product Code

MOD000376 ⁽²⁾

Specification Data	Unit	Value
AR-coating	nm	790 - 990
Remaining divergence (FW1/e ²) for slow axis	mrad	90 (typically)

⁽¹⁾ Valid for an emitter-height of 1 μm and no smile of the laser diode.

⁽²⁾ Example for customization – customized coating and bottom tab for mounting on request.

Product Dimensions (mm)

